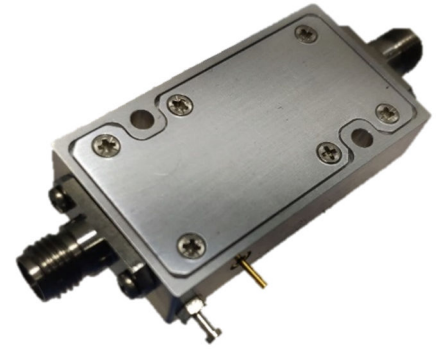


FEATURES:

- Broadband Performance
- Flat Gain
- High Efficiency
- Field Replacable SMA Connectors
- Internal Regulator



ELECTRICAL SPECIFICATIONS:

Parameter	Min.	Typ.	Max.	Units
Operating Frequency	500		6000	MHz
Small Signal Gain	25	27	29	dB
Gain Flatness			±1.5	dB
P1dB	27	28		dBm
P1dB Flatness			±1	dBm
PAE		20		%
Noise Figure		3		dB
Input VSWR			2:1	
Output VSWR			2:1	
Operating DC Voltage	+12	+12	+15	Volts
Operating DC Current		220		mA

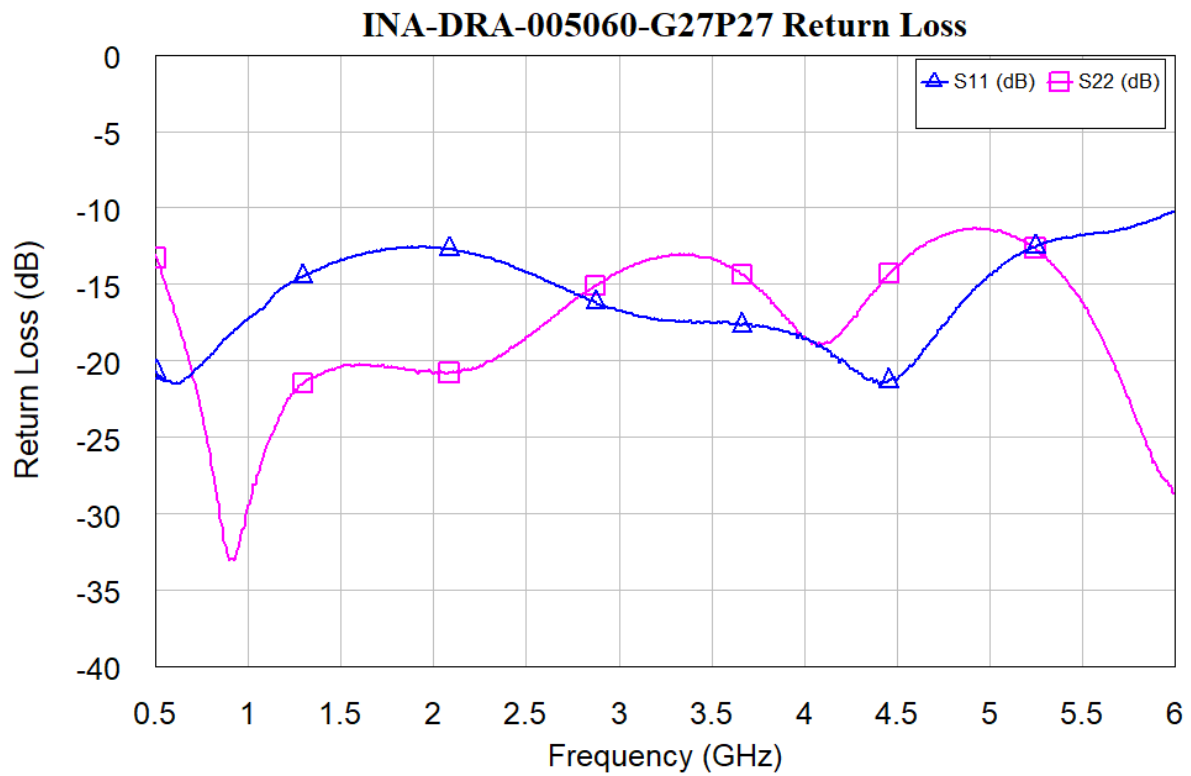
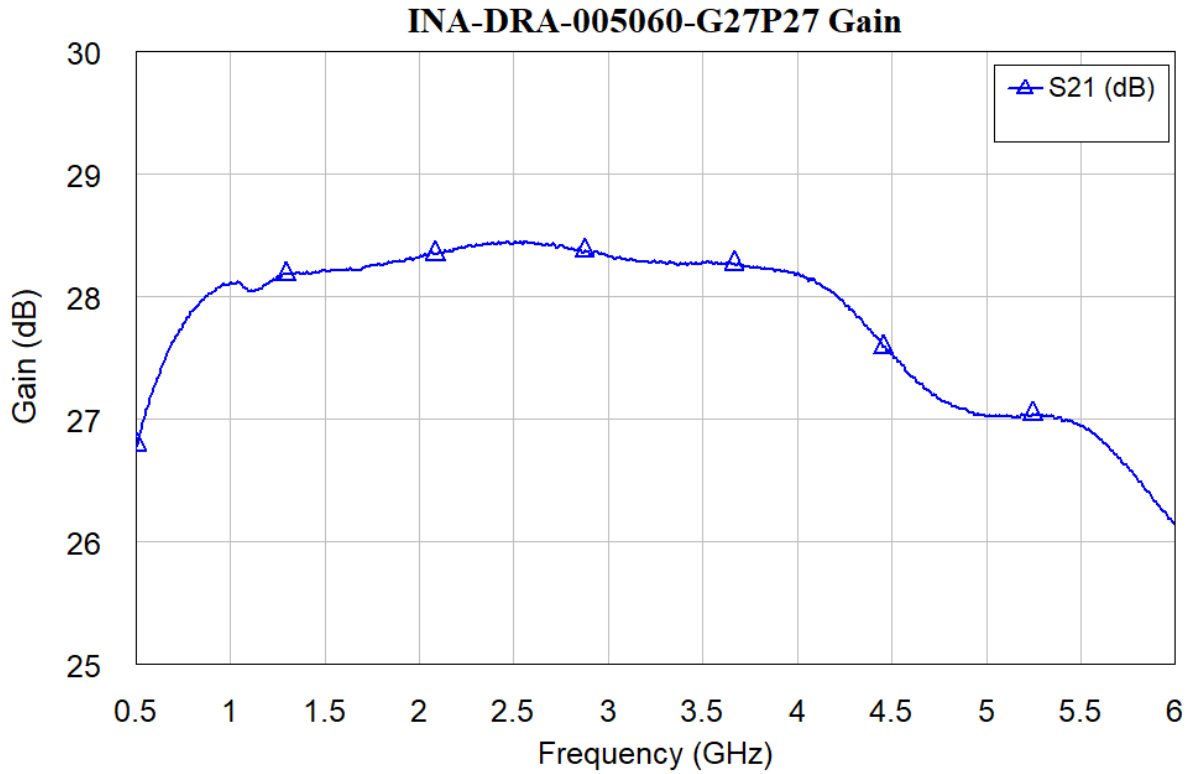
*Electrical specifications are given at 25C.

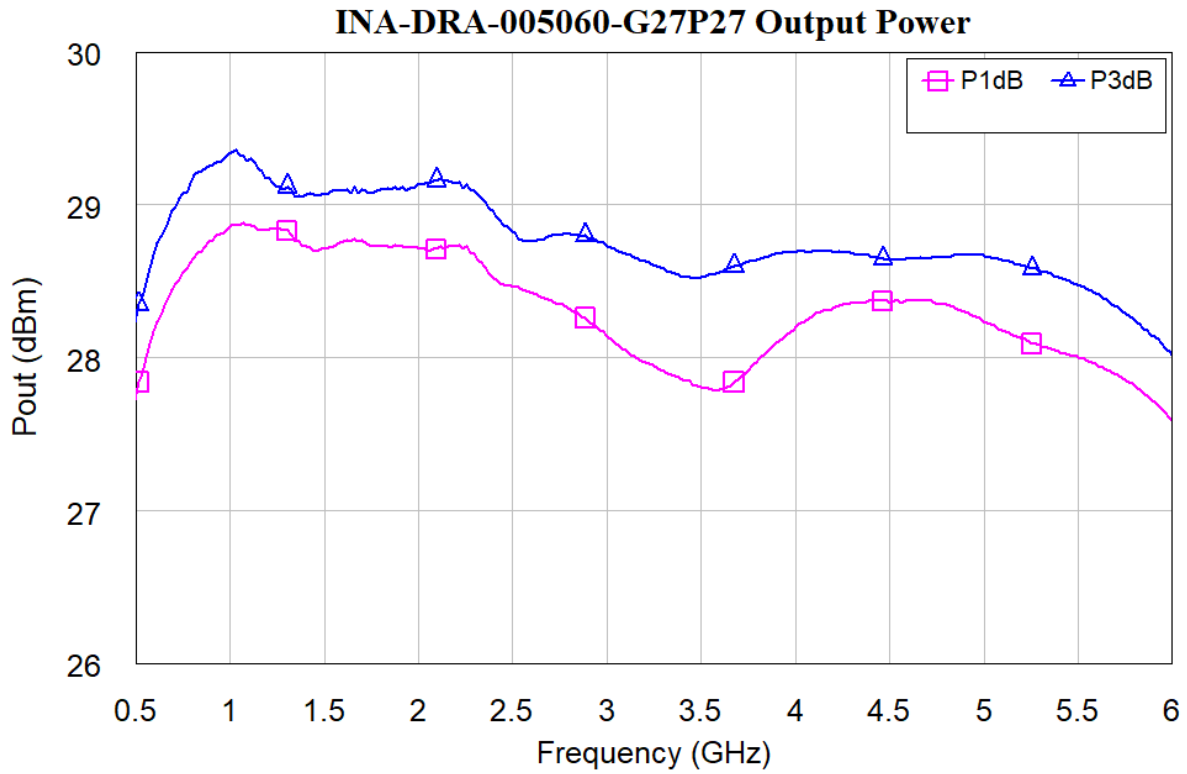
ABSOLUTE MAXIMUM RATING:

Parameter	Min.	Typ.	Max.	Units
DC Voltage			+15	Volts
RF Input Power			+20	dBm
Operating Case Temperature	-40		+85	°C
Storage Temperature	-55		+125	°C

MECHANICAL SPECIFICATIONS:

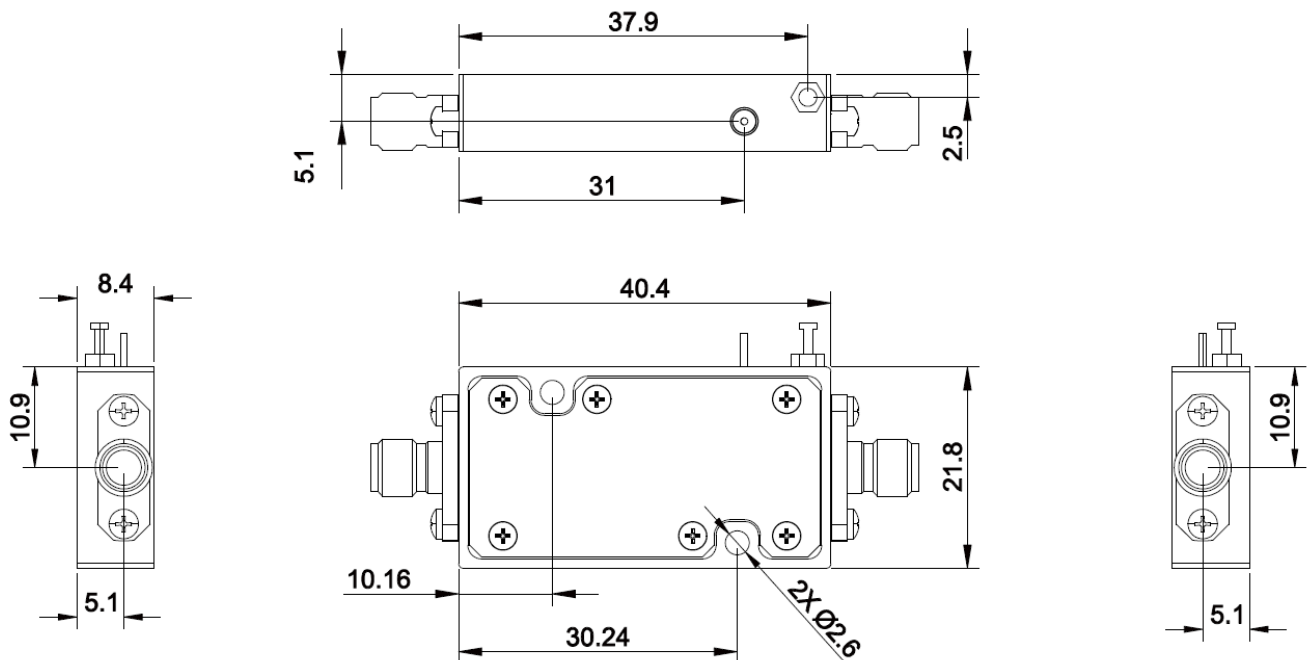
Parameter	Value	Units
Dimensions (L x W x H)	40.4 x 21.8 x 8.4	mm
Weight	21.4	gr
RF Connector, Input	SMA, Female	
RF Connector, Output	SMA, Female	
DC Connector	0.03" Feedthru Pin	
Cooling	External Heatsink Required	





MECHANICAL OUTLINE:

- All dimensions are in mm



REVISION HISTORY	DESCRIPTION
P1_221010	Initial Release of Preliminary Datasheet
P2_230103	Mechanical Outline Added. Operating Temperature Range is Updated Storage Temperature Range is Updated